



<b>EAN:</b>	4013288210258	<b>Size:</b>	117x45x21 mm
<b>Part number:</b>	05004500001	<b>Weight:</b>	31 g
<b>Article number:</b>	8790 HMA Deep	<b>Country of origin:</b>	TW
		<b>Customs tariff number:</b>	82042000

- Long sockets for low-lying screwdriving, often even with protruding threaded rods in small spaces
- Hexagonal profile enables precise bolting with high power transmission and preserves the profile
- With Take it easy tool finder: colour coding by size
- Knurling on lower end for more grip when used manually.
- For manual and machine operation (non-impact), ball intercept ring
- Made of matt chromed chrome-vanadium

Long 1/4" hand and machine socket (ISO 2725 part 3) with ball intercept ring; for external hexagonal bolts and sockets. For use in manual and machine operation (non-impact), even with low-lying screwdriving and protruding threaded rods. With Take it easy tool finder with colour coding by size - for easy and fast location of the required tool. Easy to grasp even with oily hands. The hexagon profile allows the transmission of high forces and puts less strain on the edges of bolts or screw heads than a double hexagon profile. Fine-toothed ratchets also make the use of a double hexagon profile superfluous, even in confined spaces, thanks to their small return angle.

**Web link**
<https://www.wera.de/en/05004500001>

Wera - 8790 HMA Deep  
 05004500001 - 4013288210258

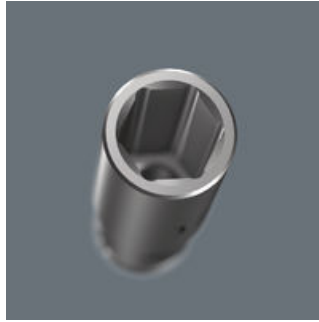
Wera Werkzeuge GmbH  
 Korzter Straße 21-25  
 D-42349 Wuppertal  
 Tel: +49 (0)2 02 / 40 45-0  
 E-Mail: info@wera.de

#### Long design



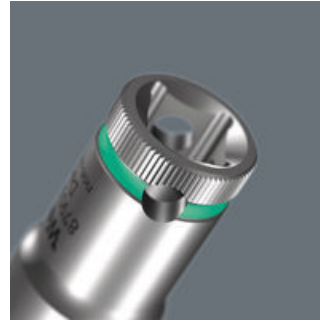
Thanks to the long design of the sockets, even couplings in tight spaces can be reached. Screwdriving at protruding thread rods can also be possible.

#### Profile-friendly power transmission



The hexagon profile offers the transmission of high forces and loads the edges of the bolt or the screw head less than a double hexagon profile. Fine-toothed ratchets also make use of a double hexagon profile superfluous, even in confined spaces, thanks to their small return angle.

#### Knurling



Knurling on lower end for more grip when used manually.

#### Chrome vanadium steel



The insert tools are suitable for high loads thanks to their chrome-vanadium steel design.

#### Take it easy tool finder system



Take it easy tool finder system - with profile and size colour-coding for quick and easy tool selection. Colour-coded system for hexagon drive screws (L-Keys, Zyklop bit sockets), external hex drive screws and nuts (Joker wrenches, Zyklop sockets and Zyklop bit sockets with holding function), and TORX® drive screws (L-Keys, Zyklop bit sockets).






#### Web link

<https://www.wera.de/en/05004500001>

Wera - 8790 HMA Deep  
05004500001 - 4013288210258

Wera Werkzeuge GmbH  
Korzter Straße 21-25  
D-42349 Wuppertal  
Tel: +49 (0)2 02 / 40 45-0  
E-Mail: [info@wera.de](mailto:info@wera.de)

Further versions in this product family:

						
		mm	inch	mm	mm	mm
<b>05004500001</b>	<b>violett_2735C</b>	<b>4.0</b>	-	<b>50.0</b>	<b>6.7</b>	<b>11.8</b>
05004501001	leuchtgruen_375C	5.0	-	50.0	8.0	11.8
05004502001	leuchtorange_152C	5.5	-	50.0	8.6	11.8
05004503001	blau_307C	6.0	-	50.0	9.2	11.8
05004504001	gelb_123C	7.0	-	50.0	10.8	11.8
05004505001	leuchtpink_232C	8.0	-	50.0	11.8	11
05004506001	gruen_363C	9.0	-	50.0	12.8	12
05004507001	leuchtgelb_yellowC	10.0	-	50.0	14.7	12.8
05004508001	cyan_2985C	11.0	-	50.0	15.8	14.0
05004509001	schwarz_blackC	12.0	-	50.0	16.8	15.0
05004510001	tuerkis_339C	13.0	-	50.0	17.8	16.0
05004511001	pink_241C	14.0	-	50.0	19.8	17.0
05004512001	weiss	15.0	-	50.0	20.8	18.0
05004520001	tuerkis_339C	-	1/2"	50.0	17.8	16.0

## Web link

<https://www.wera.de/en/05004500001>

Wera - 8790 HMA Deep  
05004500001 - 4013288210258

Wera Werkzeuge GmbH  
Korzter Straße 21-25  
D-42349 Wuppertal  
Tel: +49 (0)2 02 / 40 45-0  
E-Mail: info@wera.de